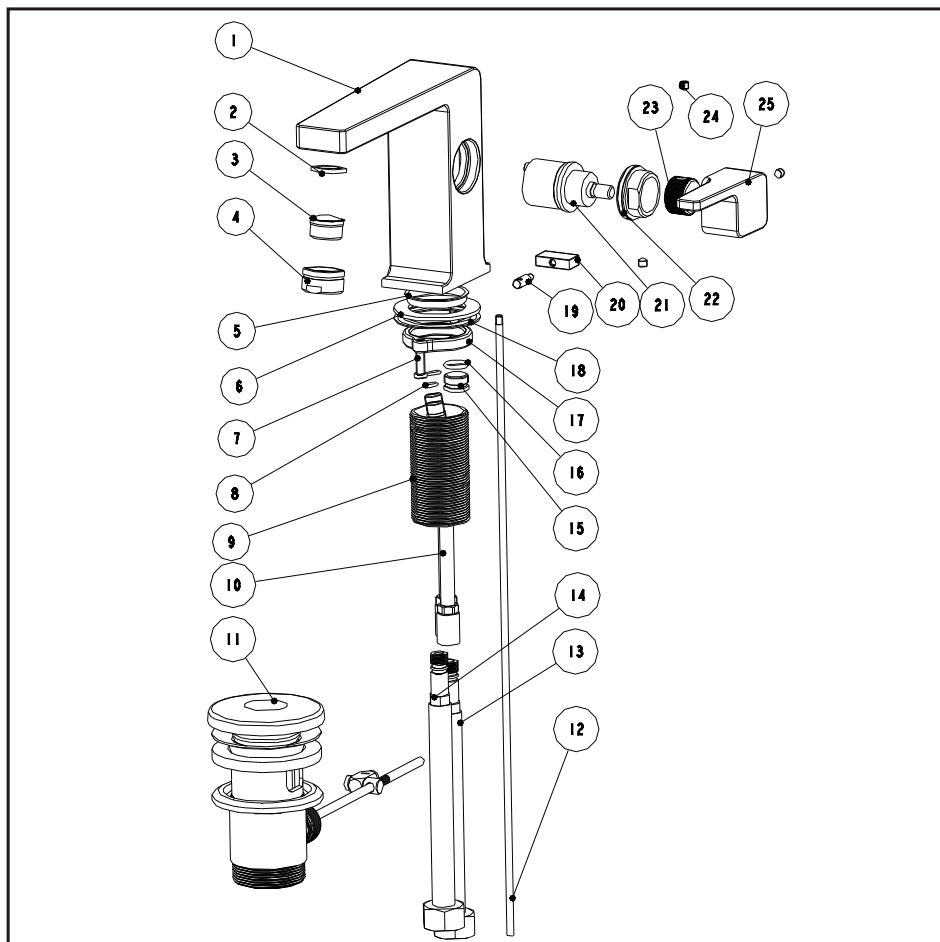


# Basin mixer

## Installation Instruction

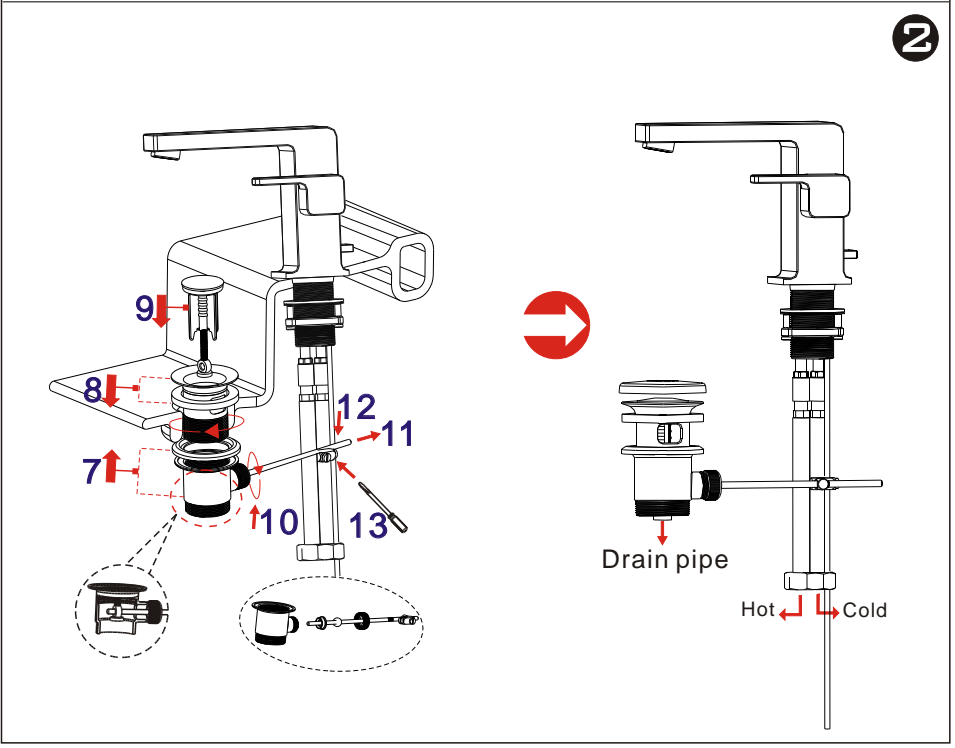
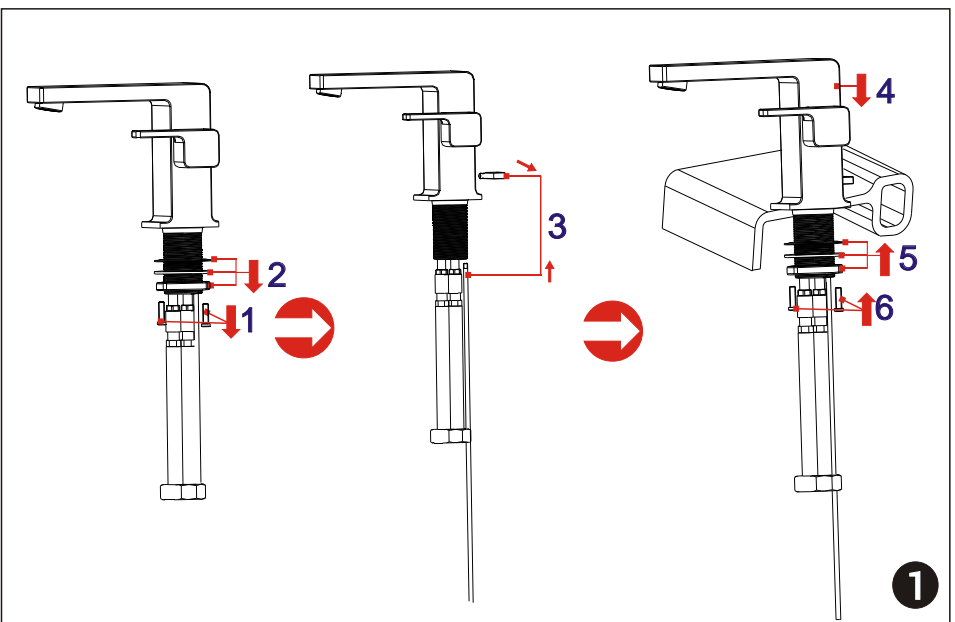
Please read this instruction carefully to avoid any difficulty during installation.



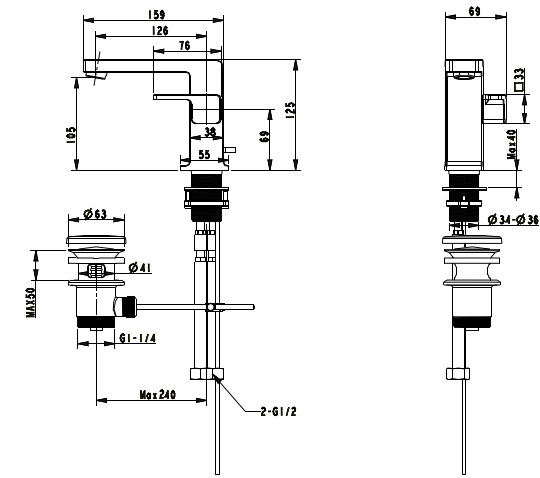
## Components List

No.	Component	Quantity
1	Main body	1
2	Flat washer	1
3	Aerator core	1
4	Aerator coat	1
5	Washer	1
6	Washer	1
7	Cross-head screw	2
8	O-ring	2
9	Thread pipe	1
10	Inlet	2
11	Pop-up waste	1
12	Pop-up rod	1
13	Flexible connection hose (blue)	1
14	Flexible connection hose (red)	1
15	Stopper	1
16	O-ring	1
17	Fastening nut	1
18	Washer	1
19	Union	1
20	Knob	1
21	Ceramic cartridge	1
22	Fastening screw	1
23	Union	1
24	Female allen screw	3
25	Handle	1

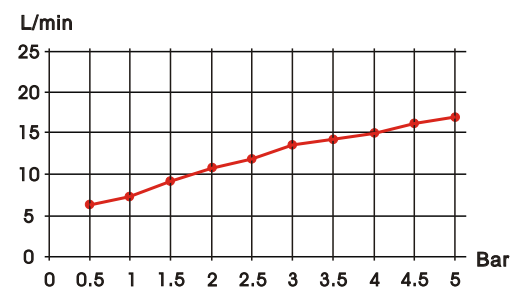
## Installation Step



## Installation Fig



## Flow rate Curves



Test pressure: 1.6MPa (16bar)  
 Flow pressure:  
 Min 0.05MPa  
 Max 1.60MPa  
 Recommended pressure:  
 0.1MPa to 0.8MPa (1 to 8 bar)

## Note

1. Ensure proper cleaning of the water supply pipe before installation to avoid any jammed.
2. The cold-water supply must be connected on the right and the hot-water supply must be connected to the left.
3. Check the installation dimensions according to the Figure and ensure it is installed correctly.
4. Hot-water inlet temperature must not be over 80°C.